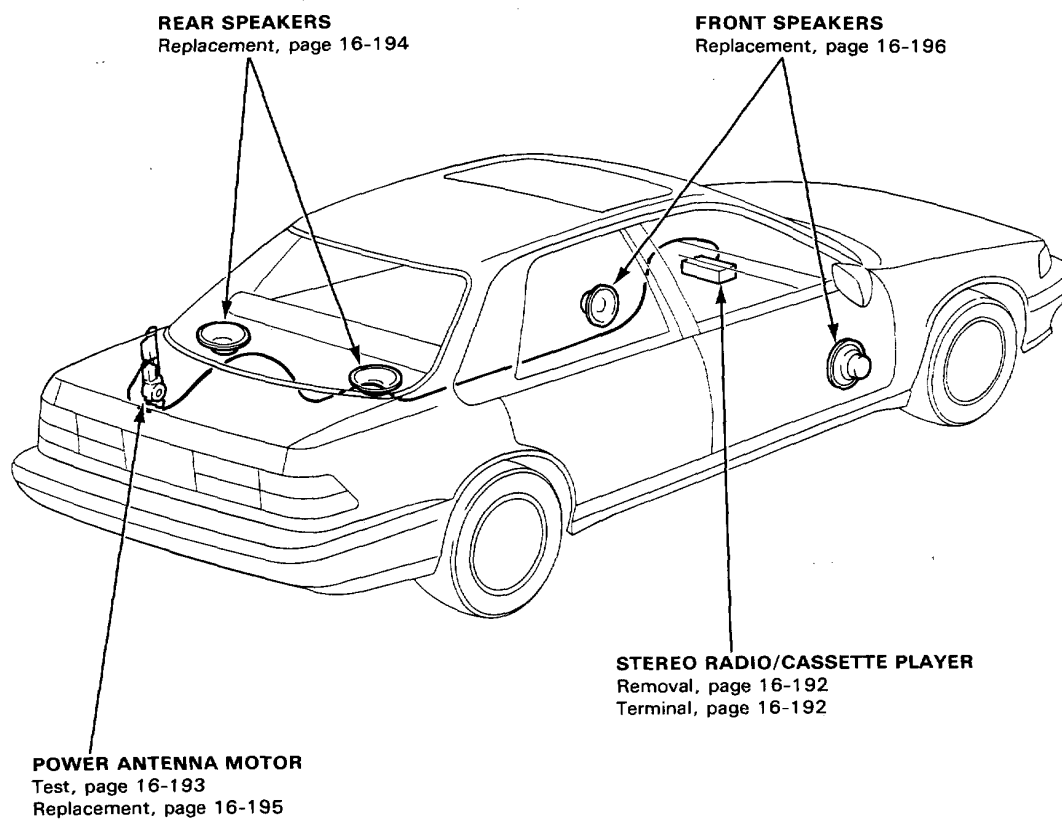


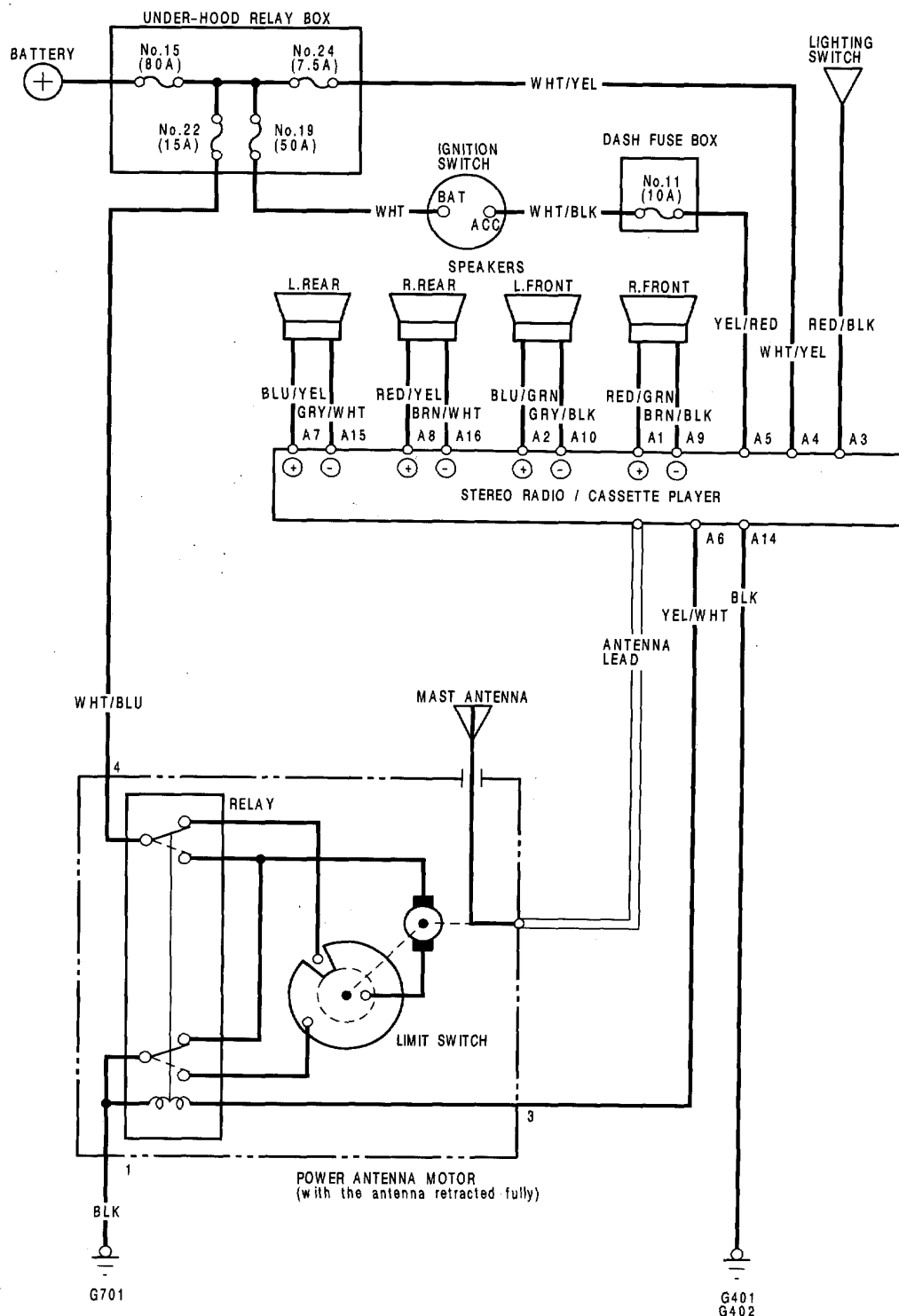
Stereo Sound System

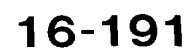
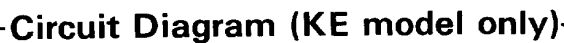
Component Location Index



Stereo Sound System

Circuit Diagram (Except KE model)



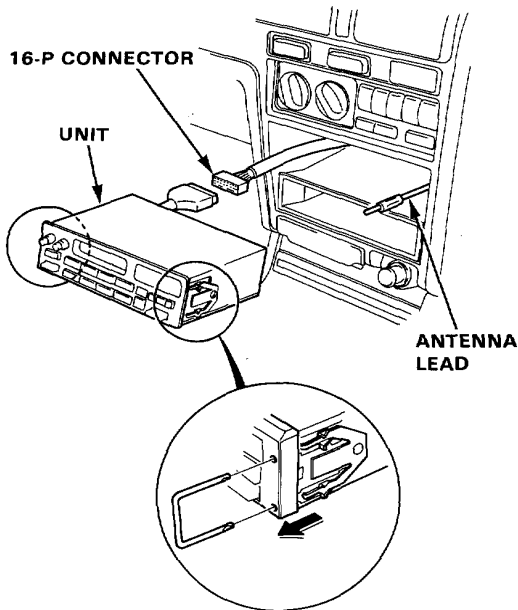


Stereo Sound System

Unit Removal

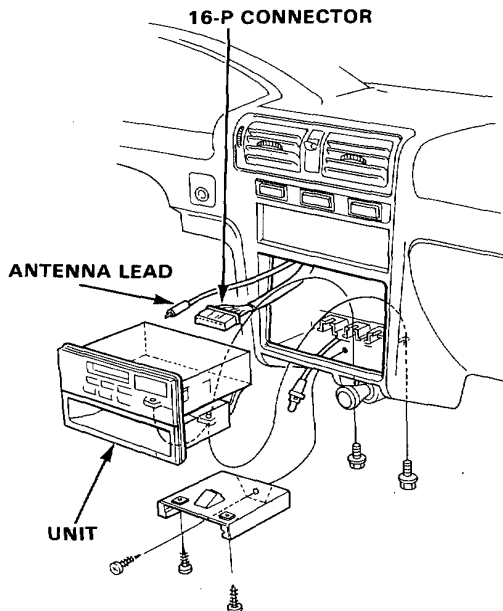
A-Type:

Remove the needle remover to pull out the unit.

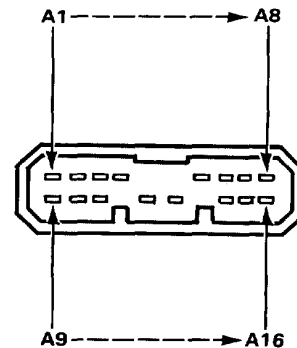


B-Type:

1. Remove the floor console.
2. Remove the 3 screws and ashtray.
3. Loosen the 3 screws and pull out the unit.
4. Disconnect the 16-P connector and antenna lead, then remove the unit.



Unit Terminals



Terminal (Wire color)

Destination

| | |
|---------------|-----------------------------------|
| A1 (RED/GRN) | Right front speaker ⊕ |
| A2 (BLU/GRN) | Left front speaker ⊕ |
| A3 (RED/BLK) | Light-on signal |
| A4 (WHT/YEL) | Constant power (Tuning memory) |
| A5 (YEL/RED) | ACC (Main stereo power supply) |
| A6 (YEL/WHT) | Radio switched power (To antenna) |
| A7 (BLU/YEL) | Left rear speaker ⊕ |
| A8 (RED/YEL) | Right rear speaker ⊕ |
| A9 (BRN/BLK) | Right front speaker ⊖ |
| A10 (GRY/BLK) | Left front speaker ⊖ |
| A11 (—) | (Not used) |
| A12 (—) | (Not used) |
| A13 (—) | (Not used) |
| A14 (BLK) | Ground (G401, G402) |
| A15 (GRY/WHT) | Left rear speaker ⊖ |
| A16 (BRN/WHT) | Right rear speaker ⊖ |



Power Antenna Motor Test

1. Remove the trunk side trim panel.
2. Disconnect the 6-P connector from the motor and remove the connector from its clamp.
3. First check power to the motor at the harness pins:
There should be battery voltage between the WHT/BLU (+) and BLK (-) terminals all the time. There should be battery voltage between the YEL/WHT (+) and BLK (-) terminals only with the ignition and radio switched ON.
4. Test motor operation:

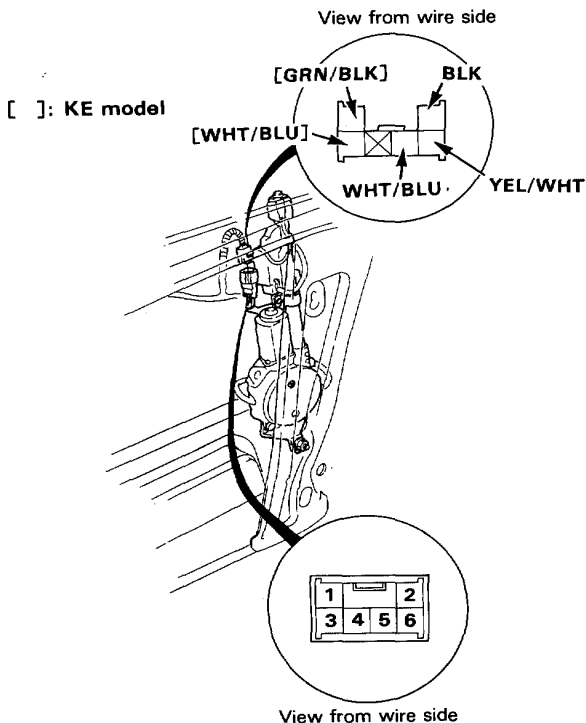
FULL EXTEND: Connect battery positive to the No.3 and No.4 terminals and negative to the No.1 terminal.

RETRACTED: **Except KE model:**

Then disconnect battery positive from the No.3 terminal.

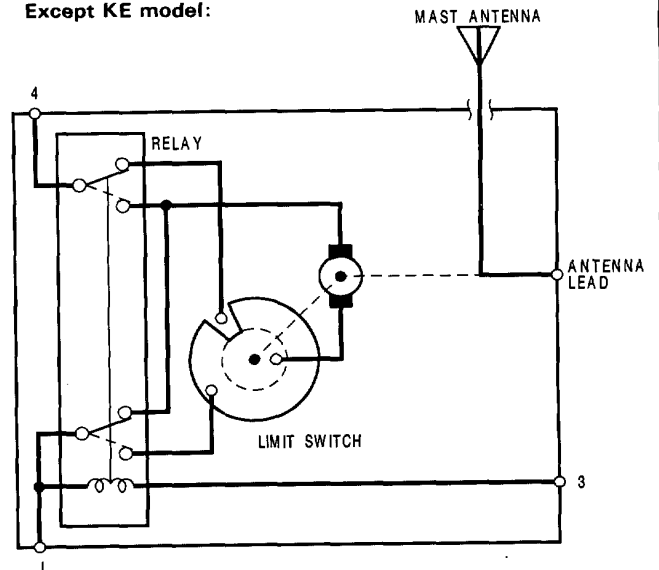
KE model only:

Short the No.2 terminal to the No.1 terminal, then connect battery positive to the No.6 terminal and negative to the No.1 terminal.

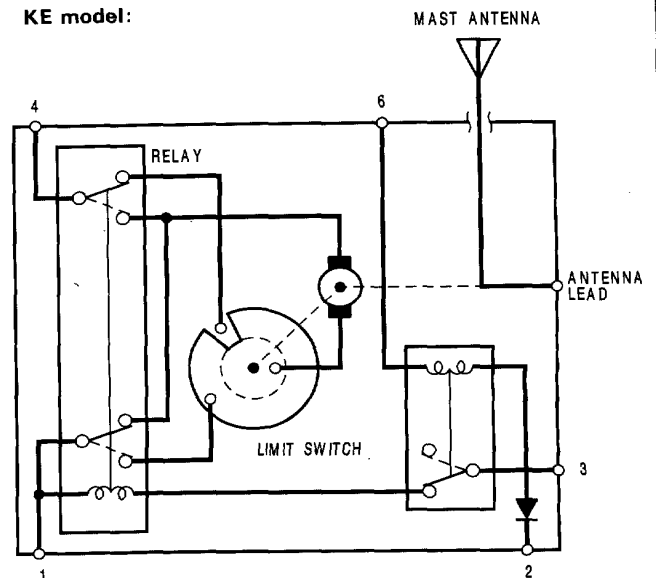


5. If the motor fails to operate properly, replace it.

Except KE model:



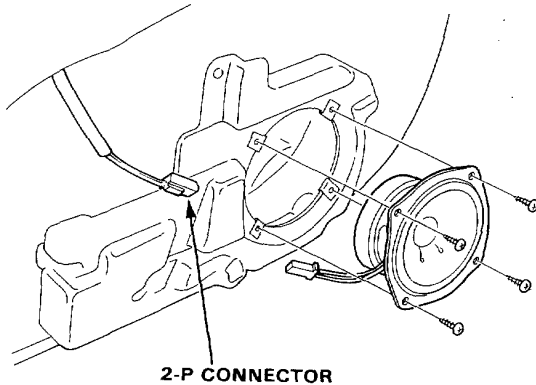
KE model:



Stereo Sound System

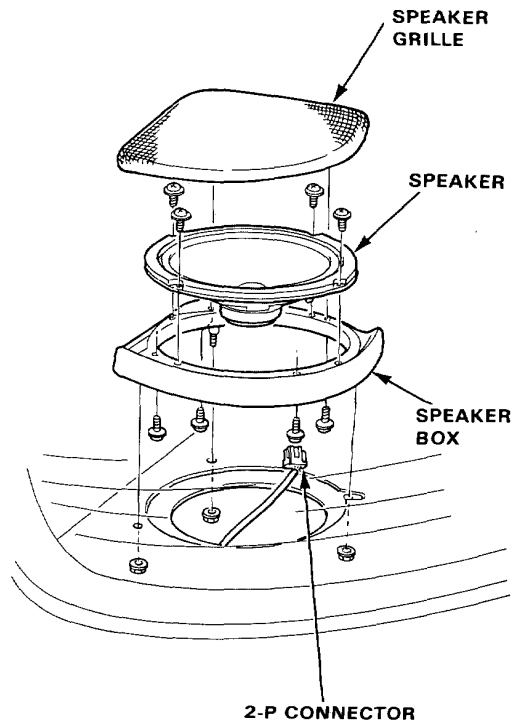
Front Speaker Replacement

1. Remove the speaker grille from the door trim panel.
2. Remove the screws, then disconnect the wires or 2-P connector from the speaker.



Rear Speaker Replacement

1. Open the trunk lid, then remove the 3 nuts.
2. Disconnect the 2-P connector from the speaker assembly.
3. Remove the speaker grille and speaker from the speaker box.



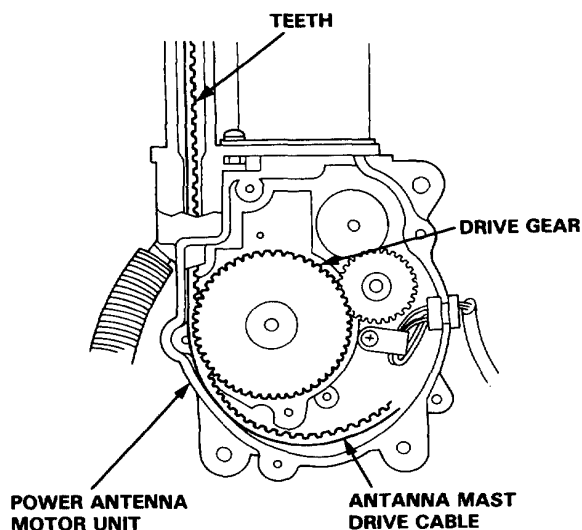
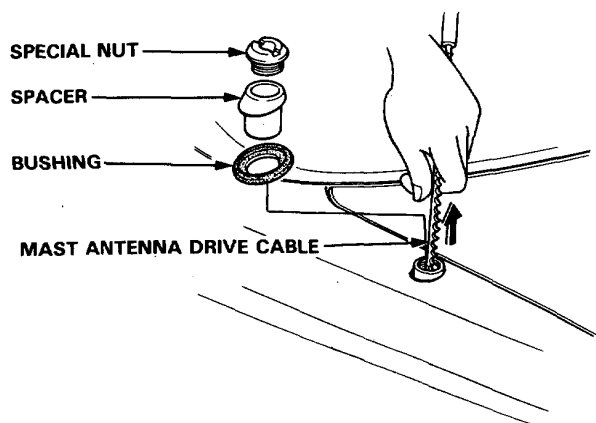


Mast Antenna Replacement

Removal

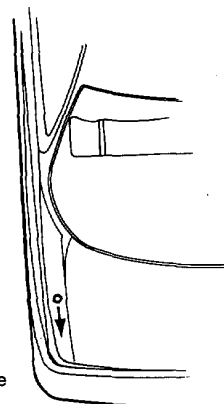
NOTE: The antenna mast alone can be replaced without having to remove the power antenna motor unit.

1. Remove the special nut, spacer and bushing.
2. Carefully withdraw the antenna mast while extending it by turning the radio switch "ON".



Installation

1. Carefully direct the teeth of antenna mast drive cable as shown, and insert the drive cable into the antenna housing.

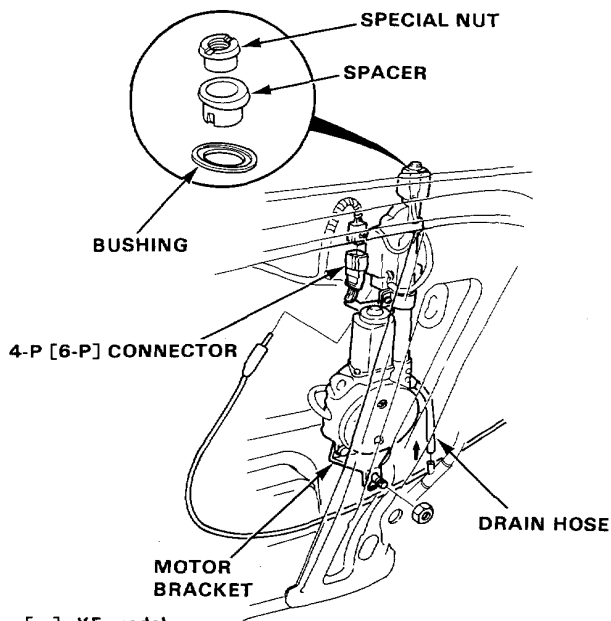


2. Check for engagement of the cable teeth to the drive gear; by carefully moving the cable up and down.
3. Turn the radio switch "OFF", and let the motor pull the drive cable inside the antenna housing.
4. Insert the antenna mast into the antenna housing, and install the bushing and spacer, tighten the special nut.
5. Check that the mast antenna retracts and extends fully when the radio switch is turned ON and OFF repeatedly.

Stereo Sound System

Power Antenna Motor Replacement

1. Remove the trunk side trim panel.
2. Disconnect the 4-P [6-P] connector and antenna lead from the motor, then remove the special nut and mounting nuts to take out the motor with the mast antenna.



[]: KE model

3. Install in the reverse order of removal.

NOTE: Tighten the special nut, and then tighten mounting nuts to motor bracket.

Retractor Relay Test

1. Remove the relay from the motor antenna.
2. There should be no continuity between the B and D terminals when the battery is connected to the C and F terminals. There should be continuity when the battery is disconnected.

